

ADGRL2 / LPHN2 Antibody (C-Terminus)
Rabbit Polyclonal Antibody
Catalog # ALS10278**Specification**

ADGRL2 / LPHN2 Antibody (C-Terminus) - Product Information

Application	IHC-P
Primary Accession	O95490
Reactivity	Human
Host	Rabbit
Clonality	Polyclonal
Calculated MW	163kDa KDa
Dilution	IHC-P~~N/A

ADGRL2 / LPHN2 Antibody (C-Terminus) - Additional Information**Gene ID** 23266**Other Names**

Latrophilin-2, Calcium-independent alpha-latrotoxin receptor 2, C1RL-2, Latrophilin homolog 1, Lectomedin-1, LPHN2, KIAA0786, LEC1, LPHH1

Target/Specificity

Human LPHN2. BLAST analysis of the peptide immunogen showed no homology with other human proteins.

Reconstitution & Storage

Long term: -70°C; Short term: +4°C

Precautions

ADGRL2 / LPHN2 Antibody (C-Terminus) is for research use only and not for use in diagnostic or therapeutic procedures.

ADGRL2 / LPHN2 Antibody (C-Terminus) - Protein Information**Name** ADGRL2 ([HGNC:18582](#))**Function**

Orphan adhesion G-protein coupled receptor (aGPCR), which mediates synapse specificity (By similarity). Ligand binding causes a conformation change that triggers signaling via guanine nucleotide- binding proteins (G proteins) and modulates the activity of downstream effectors (By similarity). Following G-protein coupled receptor activation, associates with cell adhesion molecules that are expressed at the surface of adjacent cells to direct synapse specificity. Specifically mediates the establishment of perforant-path synapses on CA1-region pyramidal neurons in the hippocampus. Localizes to postsynaptic spines in excitatory synapses in the S.lacunosum- moleculare and interacts with presynaptic cell adhesion molecules, such as teneurins, promoting synapse formation (By similarity).

Cellular Location

Postsynaptic cell membrane {ECO:0000250|UniProtKB:Q8JZZ7}; Multi-pass membrane protein

Tissue Location

Expressed very widely in all normal tissues tested. Expression is variable in tumor cell lines, apparently elevated in some lines and absent or markedly reduced in others

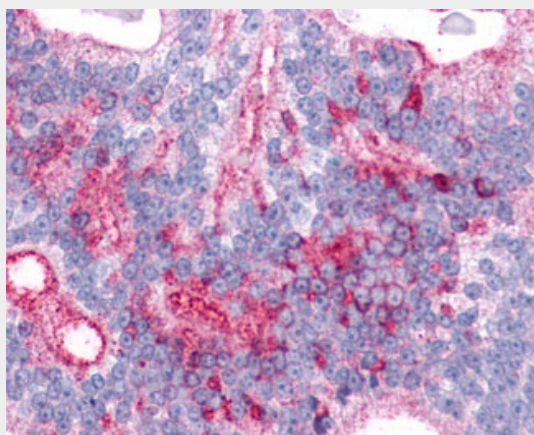
Volume

50 µl

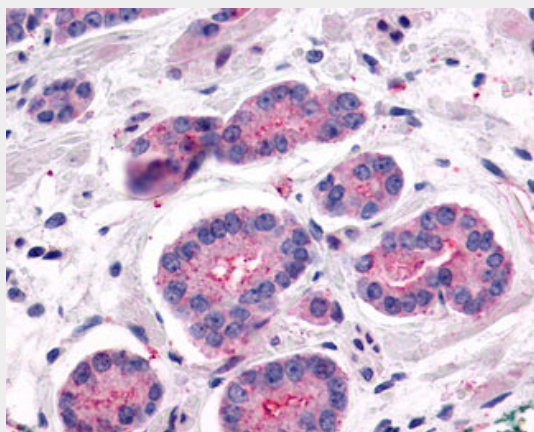
ADGRL2 / LPHN2 Antibody (C-Terminus) - Protocols

Provided below are standard protocols that you may find useful for product applications.

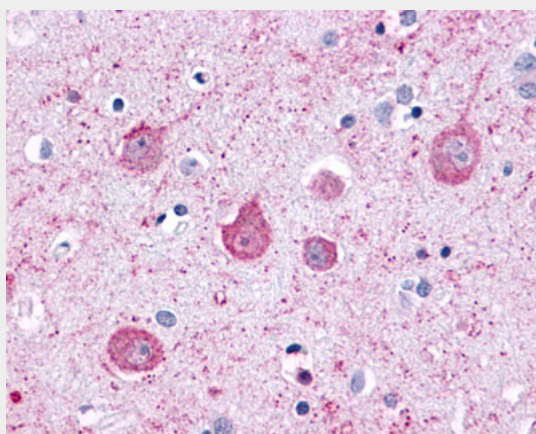
- [Western Blot](#)
- [Blocking Peptides](#)
- [Dot Blot](#)
- [Immunohistochemistry](#)
- [Immunofluorescence](#)
- [Immunoprecipitation](#)
- [Flow Cytometry](#)
- [Cell Culture](#)

ADGRL2 / LPHN2 Antibody (C-Terminus) - Images

Anti-LPHN2 / Latrophilin-2 antibody IHC of human prostate, carcinoma.



Anti-LPHN2 / Latrophilin-2 antibody IHC of human Prostate, Carcinoma.



Anti-LPHN2 antibody ALS10278 IHC of human brain, neurons and glia.

ADGRL2 / LPHN2 Antibody (C-Terminus) - Background

Calcium-independent receptor of low affinity for alpha- latrotoxin, an excitatory neurotoxin present in black widow spider venom which triggers massive exocytosis from neurons and neuroendocrine cells. Receptor probably implicated in the regulation of exocytosis (By similarity).

ADGRL2 / LPHN2 Antibody (C-Terminus) - References

- White G.R.M.,et al.Oncogene 17:3513-3519(1998).
- White G.R.M.,et al.Biochim. Biophys. Acta 1491:75-92(2000).
- Hayflick J.S.,et al.Submitted (NOV-1998) to the EMBL/GenBank/DDBJ databases.
- Gregory S.G.,et al.Nature 441:315-321(2006).
- Mural R.J.,et al.Submitted (SEP-2005) to the EMBL/GenBank/DDBJ databases.